



Continuing the Development of Outbound Tourism Statistics Compilation

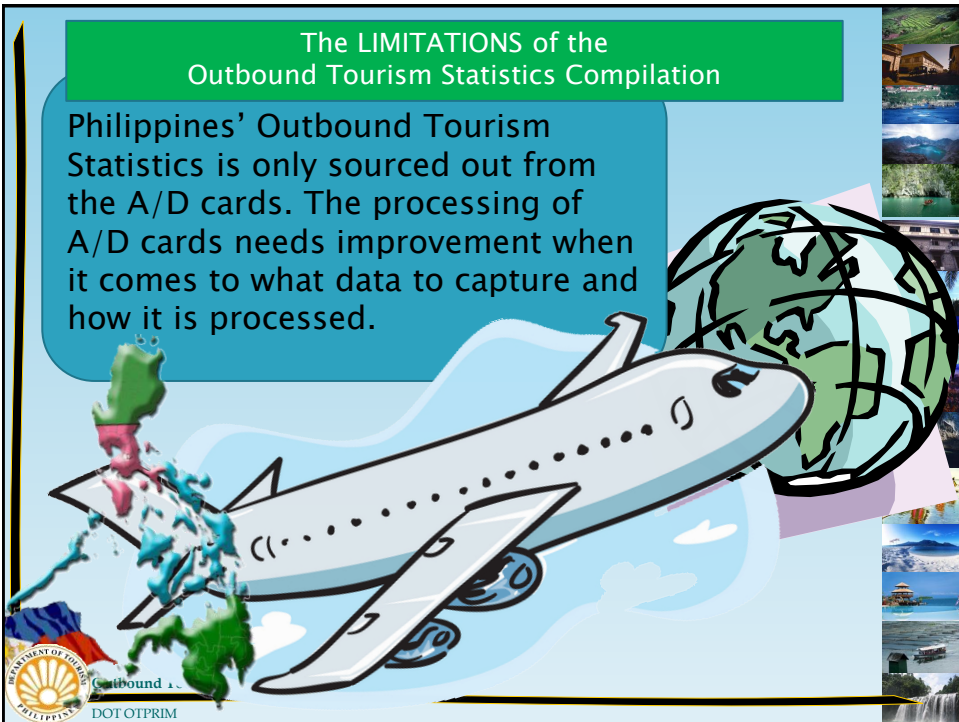
PHILIPPINE DEPARTMENT OF TOURISM

Philippine Outbound Tourism Statistics Compilation and its Limitations

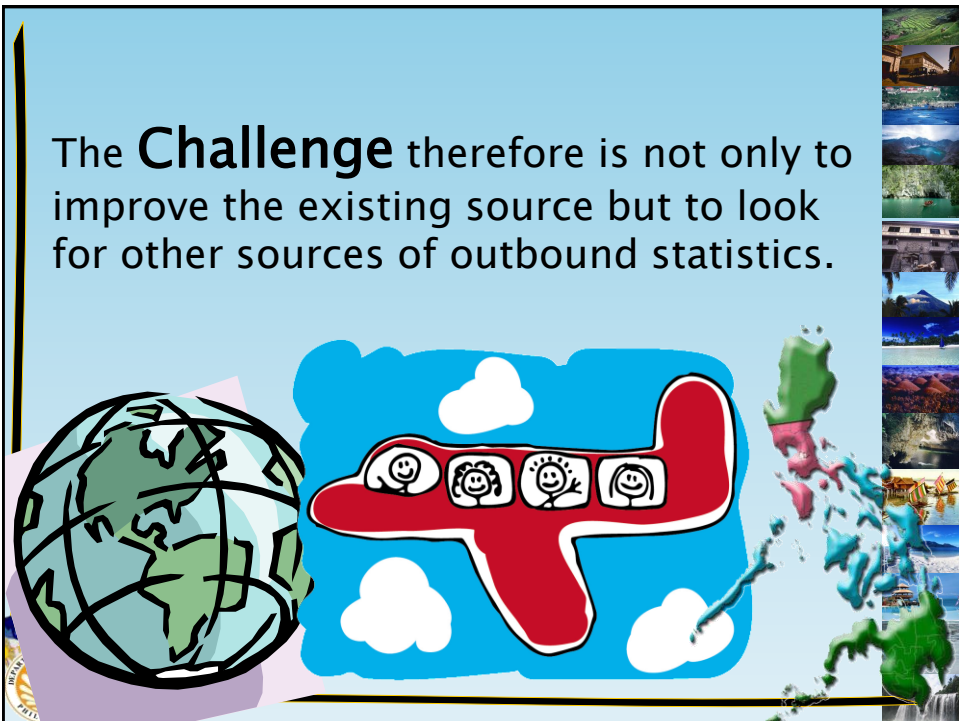
ism

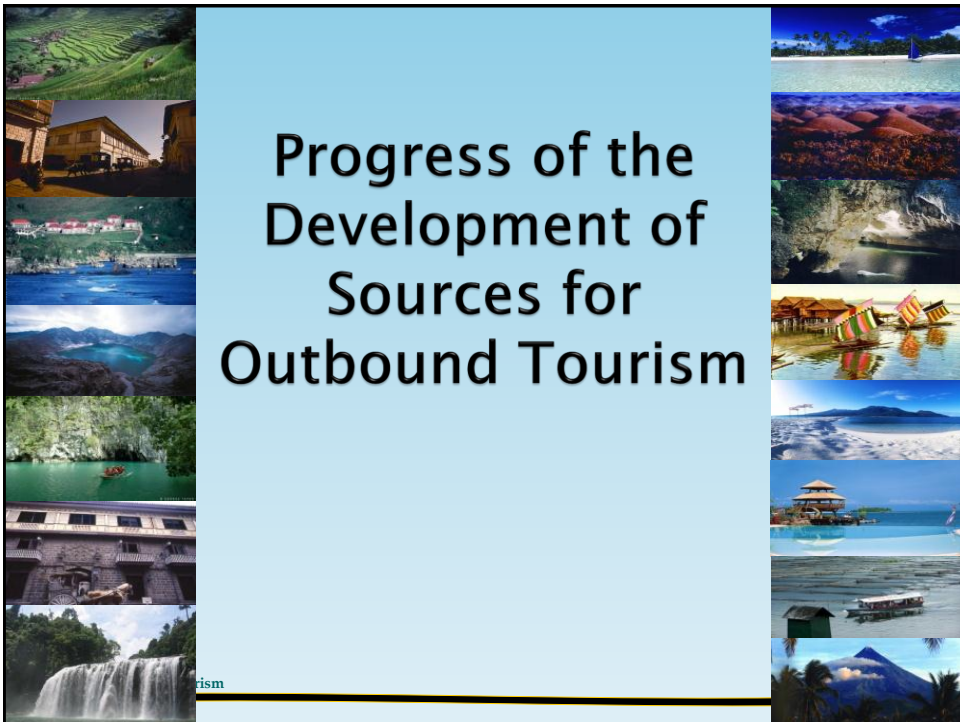
The LIMITATIONS of the Outbound Tourism Statistics Compilation

Philippines' Outbound Tourism Statistics is only sourced out from the A/D cards. The processing of A/D cards needs improvement when it comes to what data to capture and how it is processed.



The **Challenge** therefore is not only to improve the existing source but to look for other sources of outbound statistics.





➤ The Household Survey on Domestic Visitors

– The Household Survey on Domestic Visitors (HSDV)– source of domestic and outbound tourism data.

– Results of the 2010 HSDV is currently being processed by the NSO.

❖ *Major Outbound Tourism Data Included in the 2010 HSDV*

- Volume of Residents traveling abroad
- Country/ies visited/length of stay
- Month of travel
- Average Expenditure
- Purpose



➤ Travel Payments in the Balance of Payments (BOP)

- Additional data source from Credit Card Company Associations of the Philippines to validate data from the bank reports



Outbound Tourism
DOT OTPRIM



thank you



Outbound Tourism
DOT OTPRIM

For further inquiries, kindly email us at:
rcaizal@tourism.gov.ph or
mysay@tourism.gov.ph
Contact Number: (02) 523-7314

