

Monthly Tourist Accommodation Survey – Variables collected

- Number of stay units available
- Number of stay units sold
- Income from accommodation
- Income from restaurant and bar sales
- Other income
- Total income
- Occupancy rate
- Average income per stay unit night sold

0011

12
45

Periodic Large Sample Survey Tourist Accommodation Survey – Variables collected

The following categories of data items are collected:

- Industrial classification
- Details of employment
- Trading income
- Expenditure
- Profit or loss
- Inventories
- Book value of assets
- Details of sales of goods
- Services rendered
- Purchases ,and
- Stay units available

001

12
45

Type of accommodation - Classification

- Hotels
- Caravan
- Guest-Houses
- Other accommodation

0011

1
2
4
5

Size groups for the accommodation industry used for sampling

Size group	Turnover
Large	Turnover \geq R13 000 000
Medium	R6 000 000 \leq Turnover $<$ R13 000 000
Small	R5 100 000 \leq Turnover $<$ R6 000 000
Micro	Turnover $<$ R5 100 000

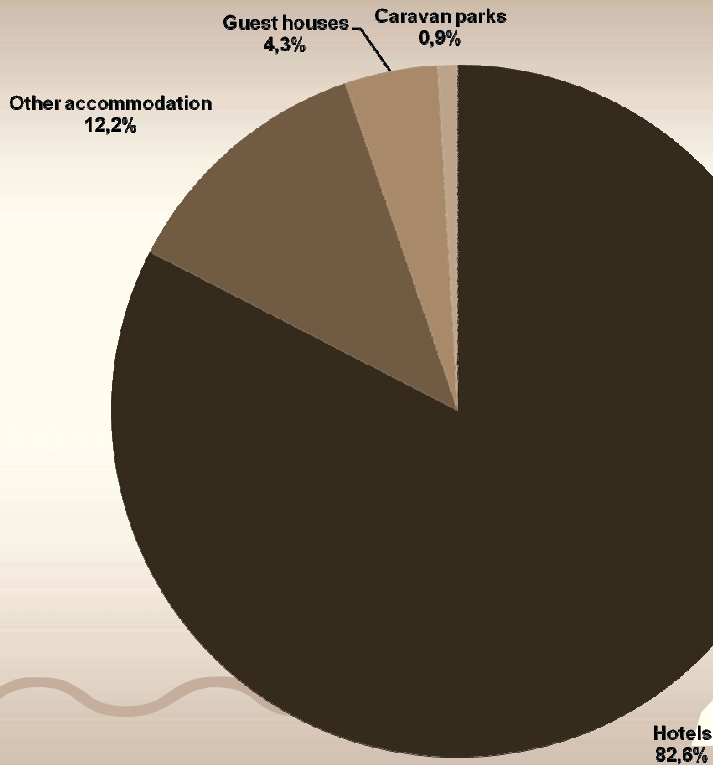
0011

1
2
4
5

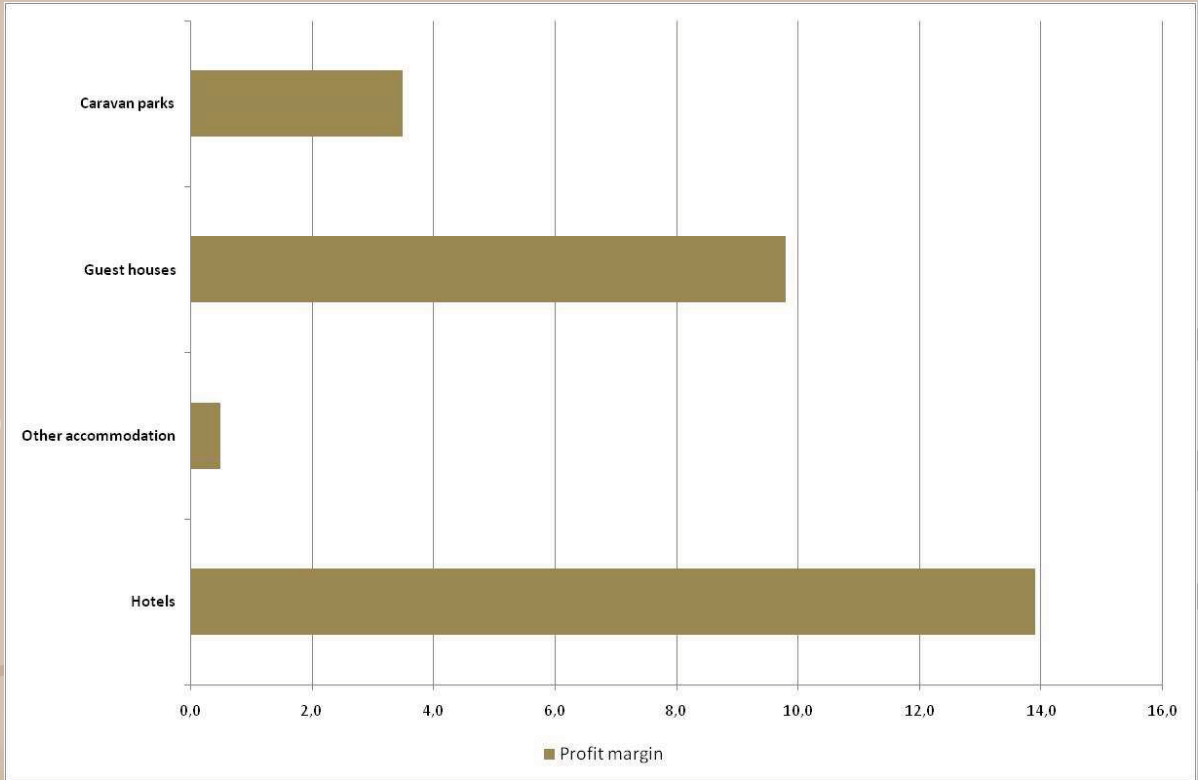
Sampling frame for the accommodation industry

	Turnover	1	2	3	4	Total
Relative importance within - Turnover	Hotels	85,1	6,0	1,2	7,7	100
	Caravan parks	72,4	7,3	1,3	19,0	100
	Guest house	24,1	14,8	5,5	55,6	100
	Other accommodation	52,6	11,3	2,1	34,0	100
	Total	73,9	7,6	1,7	16,8	100
Numbers						
Numbers	Hotels	189	138	44	1 520	1 891
	Caravan parks	4	8	2	164	178
	Guest house	11	27	15	951	1 004
	Other accommodation	60	82	24	2 899	3 065
	Total	264	255	85	5 534	6 138
Turnover						
Relative importance within - Size group	Hotels	79,4	54,0	50,3	31,8	69,0
	Caravan parks	2,9	2,8	2,3	3,3	2,9
	Guest house	1,7	10,1	16,9	17,3	5,2
	Other accommodation	15,6	32,7	27,0	44,6	22,0
	Total	100,0	100,0	100,0	100,0	100

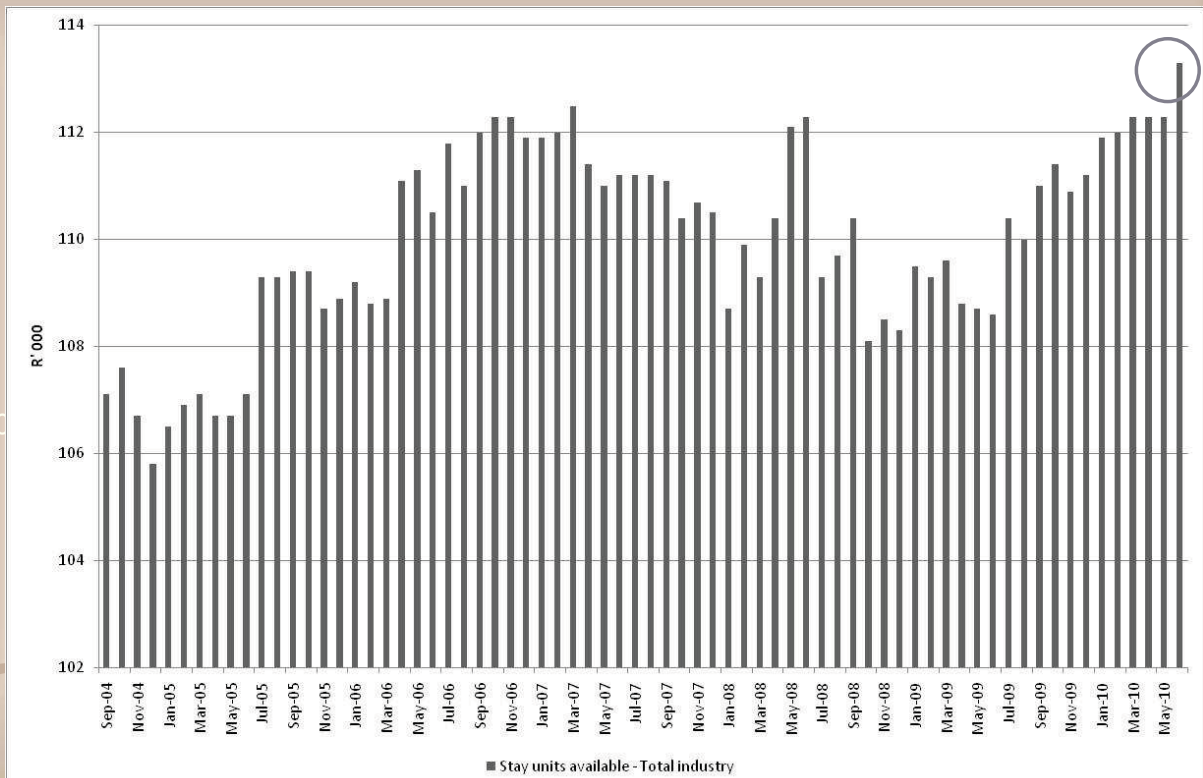
2007 LSS survey results - Income



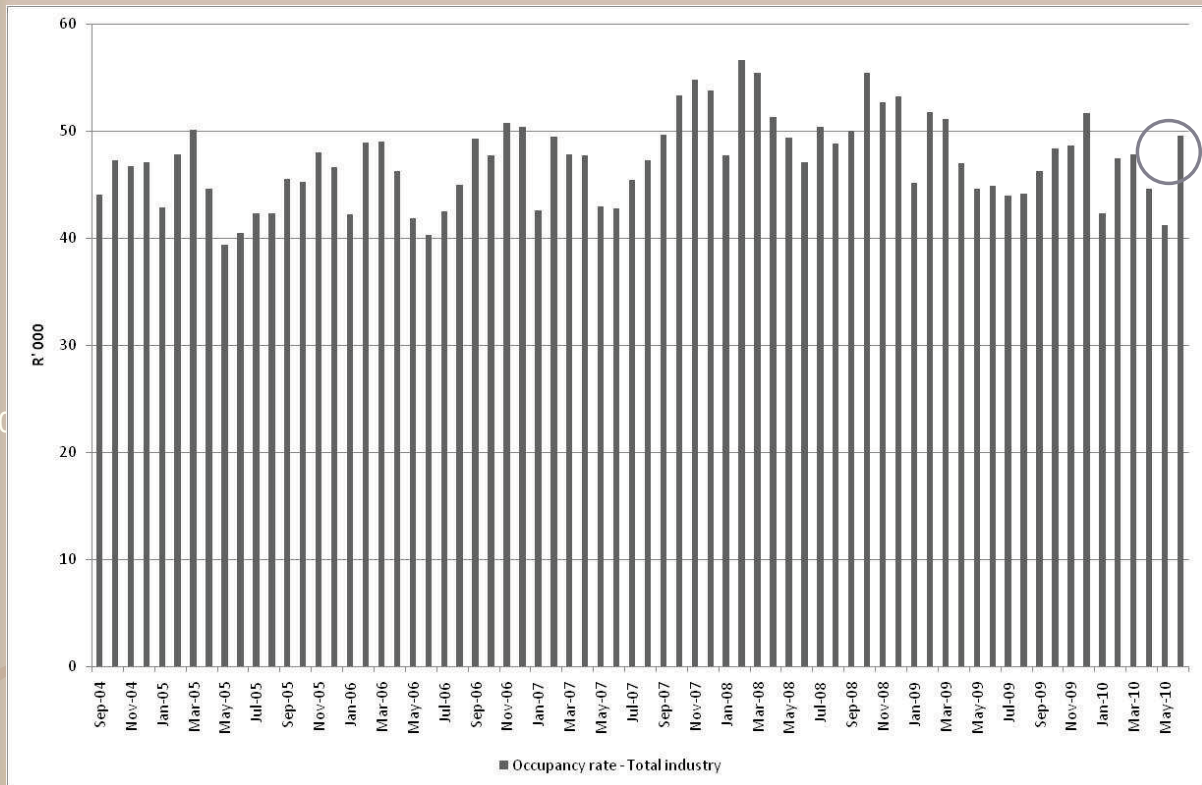
2007 LSS survey results – Profit margin



Stay units available



Occupancy rate



Key results – June 2010

Estimates	June 2010	% change between June 2009 and June 2010	% change between April to June 2009 and April to June 2010	% change between January to June 2009 and January to June 2010
Stay units available (000)	113,3	4,3	3,6	3,2
Stay unit nights sold (000)	1 685,1	15,3	2,8	-0,5
Average income per stay unit night sold (Rand)	969,1	57,6	21,8	13,8
Income from accommodation (R million)	1 633,0	81,7	25,3	14,1
Total income for the accommodation industry (R million)	2 273,0	55,3	17,8	9,9

Key results – June 2010

Type of accommodation	June 2009 (R million)	Weight 1/	June 2010 (R million)	% change between June 2009 and June 2010	% change contribution 2/
Hotels	618,0	68,8	1 128,3	82,6	56,8
Caravan parks and camping sites	7,3	0,8	14,9	104,1	0,8
Guest-houses and guest-farms	67,0	7,5	154,3	130,3	9,7
Other accommodation	206,3	23,0	335,5	62,6	14,4
Total industry	898,6	100,0	1 633,0	81,7	81,7

Thanks