

Linking Tourism & Conservation of the Environment in the Arctic

Presented by:

Lawrence Hislop
UNEP Polar Programme
UNEP/GRID-Arendal
Arendal, Norway

Venue:

Tourism Development in
Northern Regions
Arkhangelsk, Russia

Date:

May 25, 2011



Presentation Overview

- UNEP/GRID-Arendal Polar Programme
- Global Partnership for Sustainable Tourism (GPST)
- Linking Tourism and Conservation (LT&C)
- Future Initiatives - publication /seminar



What is UNEP/GRID-Arendal

Established in 1989 by the Government of Norway as a Norwegian Foundation

Mission is to communicate environmental information to policy-makers and facilitate environmental decision making for change.

GRID-Arendal is a **collaborating centre** of the United Nations Environment Programme (UNEP).

No UN employees. We operate like a non-profit organisation.



www.grida.no

UNEP Polar Programme - Mandate

1999 - UNEP has designated UNEP/GRID-Arendal as "the UNEP key centre on Polar environmental assessments and early warning issues, with particular focus on the Arctic".

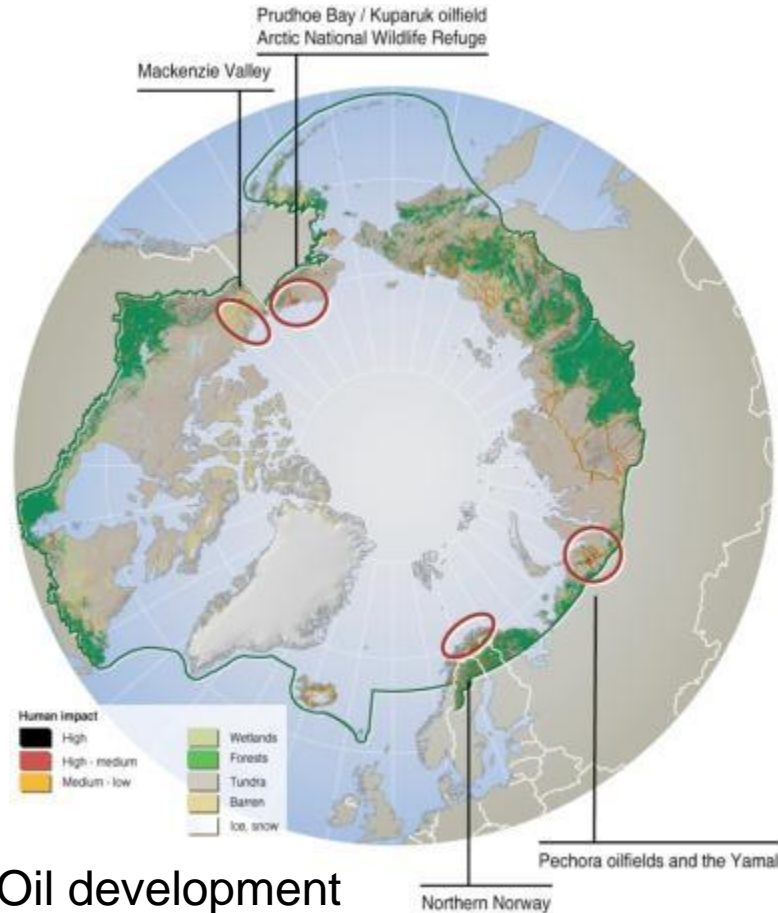


UNEP Polar Programme - Activities

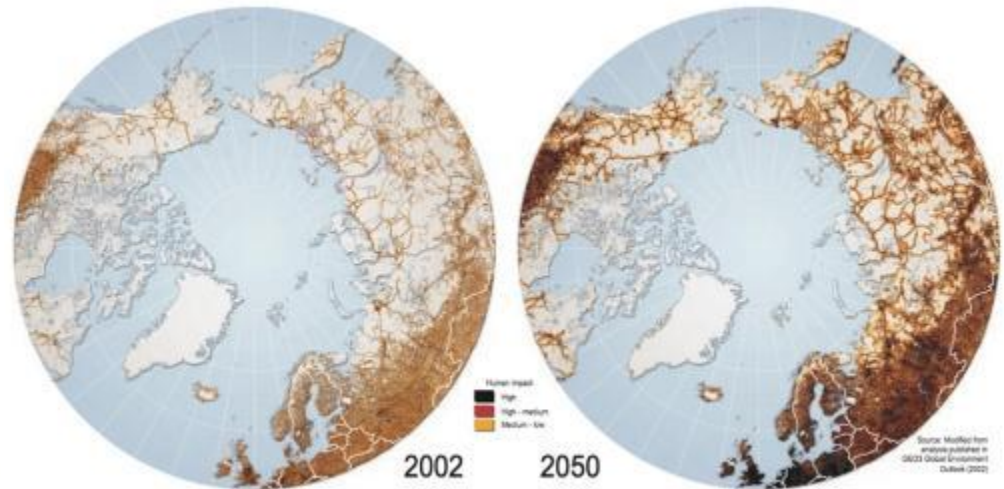
- Stakeholder processes - To facilitate and participate in stakeholder processes that recognize different values, perspectives, and knowledge, with a particular emphasis on empowering Arctic peoples.
- Assessments and Early Warning - To provide interdisciplinary polar assessments and early warning to build awareness as a foundation for decision-making (GEO).
- Capacity Building – To engage in projects and initiatives toward building the capacity of Arctic peoples to effectively manage regional challenges and to take advantage of emerging opportunities.
- Communication and Outreach - To raise the profile of the Polar Regions by providing outreach, education and communication services.
- Expertise - To provide analytical and management tools, methods and expertise to meet stakeholder demands.

Vital Graphics

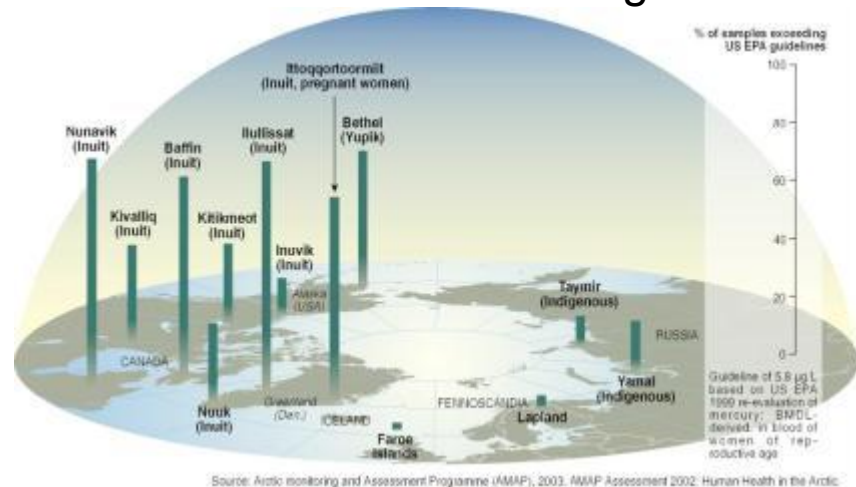
2002 - 2050 Scenarios



Oil development



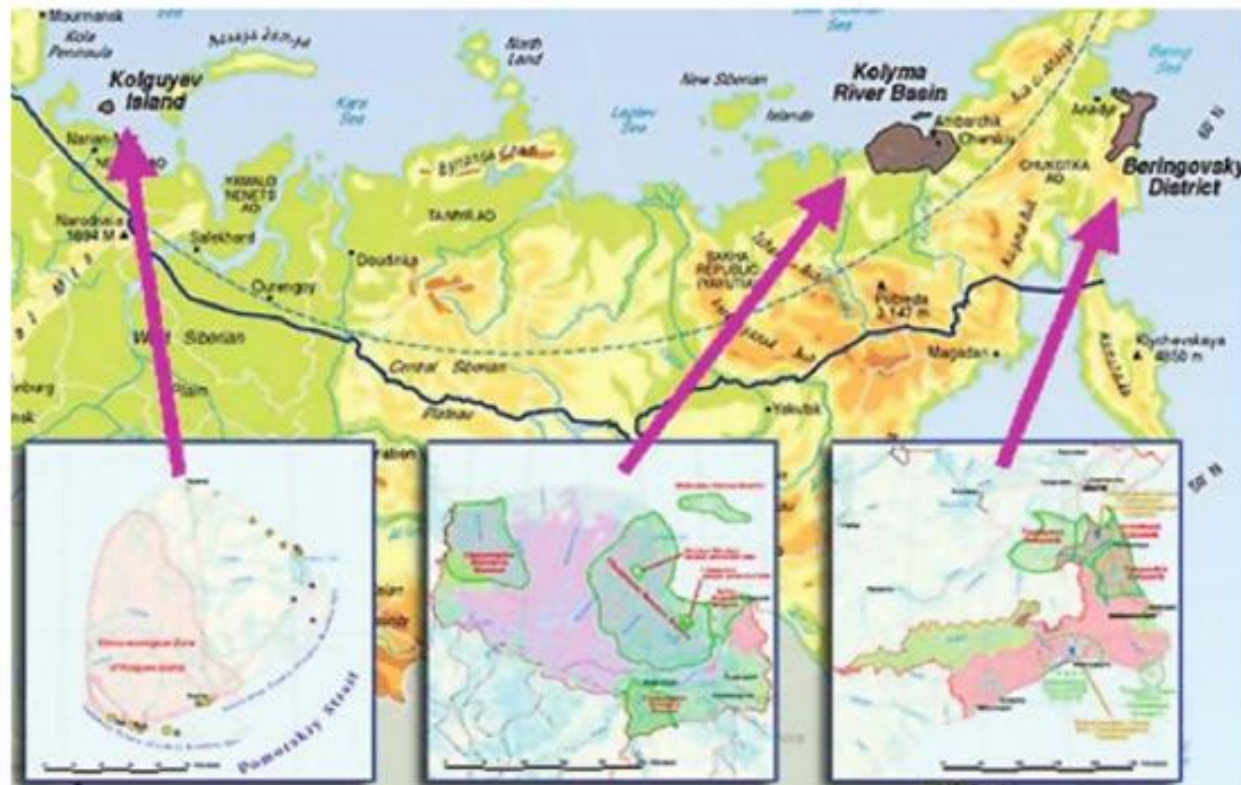
Indigenous Peoples



AN INTEGRATED ECOSYSTEM MANAGEMENT APPROACH TO CONSERVE BIODIVERSITY AND MINIMISE HABITAT FRAGMENTATION IN THREE SELECTED MODEL AREAS IN THE RUSSIAN ARCTIC (ECORA PROJECT)



117218, Moscow, Krzhizhanovsky st., 24/35, build.4, phone/fax 8(495)719-0301, e-mail: ecohealth@mtu-net.ru



The long-term development objective of ECORA is the conservation and sustainable use of biodiversity in the Russian Arctic.



Scientific and community based monitoring of biodiversity is an important part of ECORA Project.
The Project cooperates with CBMP.

Please specify what birds you have gamed and also what eggs harvested



The anonymous questionnaire of the hunter



Stakeholder Networks



ARCTIC COUNCIL

THE ARCTIC COUNCIL • ARCTIC NEWS • WORKING GROUPS • MAPS & PHOTOS • MEETINGS • LINKS

- CONTACT
- PRESS ROOM
- PASSWORD AREA

Search all of arctic-council.org

Search

Print a a a

The Arctic Council

About

The Arctic is an enormous area, sprawling over one sixth of the earth's landmass; more than 30 million km² and twenty-four time zones. It has a population of about four million, including over thirty different indigenous peoples and dozens of languages. The Arctic is a region of vast natural resources and a very clean environment compared with most areas of the world.

[Read more →](#)

Danish chairmanship

Denmark holds the chairmanship of the Arctic Council 2009-2011

[Read more →](#)

Norwegian, Danish, Swedish common objectives for their Arctic Council chairmanships 2006-2012

Common objectives and priorities for the Norwegian, Danish and Swedish

Permanent participants

The category of Permanent Participant provides for the active participation and full consultation with the arctic indigenous representatives within the Arctic Council. Two new organizations were approved as Permanent Participants at the October 2000 Barrow Ministerial, bringing the total to six.

[Read more →](#)

Member states

Member states of the arctic council are

- CANADA
- DENMARK / GREENLAND / FAROE ISLANDS
- FINLAND

THE ARCTIC COUNCIL:

- ABOUT ARCTIC COUNCIL
- DANISH CHAIRMANSHIP
- NORWEGIAN, DANISH, SWEDISH COMMON OBJECTIVES FOR THEIR ARCTIC COUNCIL CHAIRMANSHIPS 2006-2012
- DOCUMENTATION
- LINKS
- MEMBER STATES
- OBSERVERS
- PERMANENT PARTICIPANTS

Observers

Observer status in the Arctic Council is open to: a. Non-arctic states b. inter-governmental and inter-parliamentary organizations, global and regional; and c. non-

Event Calendar

WG Chairs Meeting of the Arctic Council

Mon, Mar 01, 2010 08:00 AM

Nordic Environmental Chemistry Conference

Tue, Mar 02, 2010 08:00 AM

PAME Working Group Meeting

Wed, Mar 03, 2010 08:00 AM

SDWG Meeting of the Arctic Council

Wed, Mar 03, 2010 08:00 AM

[More events](#)

Student Profile

ASP Student Finds His Future In Rovaniemi!

Thu, Apr 03, 2008

[More student profile](#)



UNIVERSITY OF THE ARCTIC

[Home](#) / [Contact](#) / [Search](#) / [Sitemap](#) / [FAQ](#) / [Russian](#) / [Catalogue](#) / [Atlas](#) / [Internal](#)



Welcome to the University of the Arctic

Call for Applications - International Master's Degree Programme in Health and Wellbeing in the Circumpolar Area (MCH)

MCH is an international two-year Master's Degree programme concentrating on the special features, questions and challenges related to the health and wellbeing in the circumpolar area. MCH graduates will be awarded a Master of Health Sciences from the University of Oulu, Finland.

[» Read more](#)

Recent News

Polar Law Program at University of Akureyri

Wed, Feb 24, 2010

Arctic Energy - The Barents Sea Conference 2010

Wed, Feb 24, 2010

New Mentor Program - Association of Polar Early Career Scientists (APECS)

Wed, Feb 24, 2010



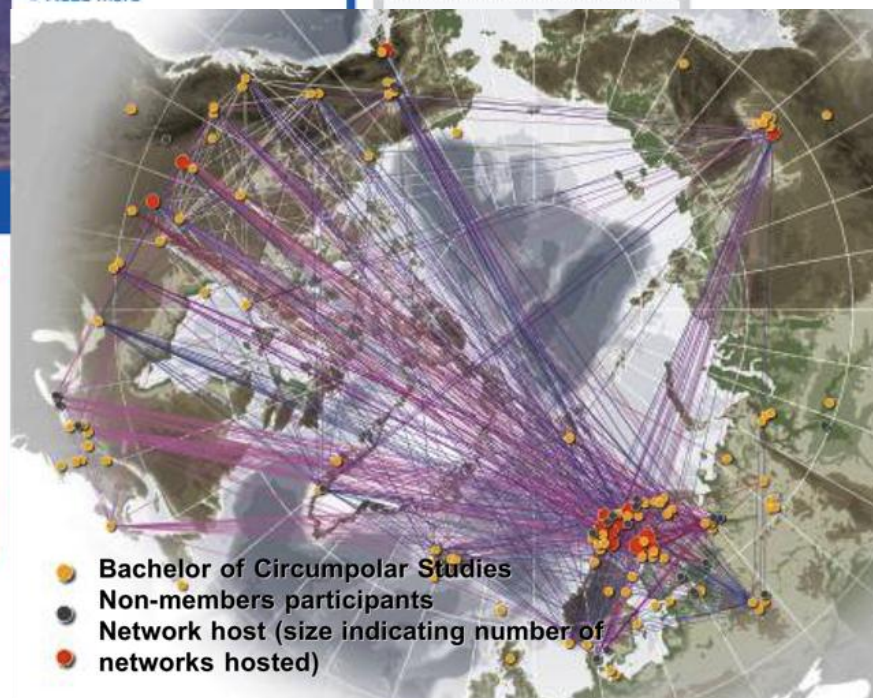
UArctic

[History](#)
[Mission](#)



Members

[List of members](#)
[How to apply for membership](#)



121 Members

Global Partnership for Sustainable Tourism (GPST)

Mission - to mainstream sustainability into tourism development by demonstrating the

- economic,
- environmental,
- socio-cultural

benefits of sustainable tourism.

GRID-Arendal in part of the advisory committee on biodiversity



Why do we need a Partnership?

- Many separate projects and initiatives
- Information overload



- Misunderstanding
- Limited results
- Money and time loss



- More loss of time and money to reach a sustainable development
- Anger, frustration, loss of trust in development cooperation



GPST Membership

UN Agencies

- UNEP (including the Secretariat of the CBD), UNWTO, UNESCO (particularly the UNESCO World Heritage Centre and the Nordic World Heritage Foundation), UNCTAD, UN Foundation, and UNIDO

Governments

- Bahamas, Brazil, Cape Verde, Cambodia, China, Costa Rica, Croatia, France, Germany, India, Madagascar, Mali, Morocco, New Zealand, Oman and Norway

Other IGOs

- European Commission, OECD, the Central American Integration System (SICA)

Major Groups

- Bureau International du Tourisme Social (BITS), Ecotrans, Fédération Universelle des Agences de Voyage, Rainforest Alliance, The International Ecotourism Society (TIES), Tourism Concern, World Wildlife Fund (WWF), consumer groups, and indigenous peoples.

Other Agencies

- ADEME, AFD, GTZ, World Bank Group

Membership Application

1. General information

Government/ organization
name

Type of organization

National Government

Local Government / City

UN Agency

Other intergovernmental organization

Not-for-profit organization

For-profit organization

Other stakeholder group, please specify:

Contact person

Title

Telephone (country code +
number)

Fax (country code +
number)

Email

Website

Mailing address

State, Province or
Department

Country

<http://www.unep.fr/scp/tourism/activities/partnership/>

Benefits

- Identify innovative and high-impact projects, policies, and **best practice**.
- Implement **projects** with the support of the Partnership team or/and its members.
- Join a results-oriented dynamic **network** of networks, spanning the public and private sector.
- Benefit from adequate information systems, **conferences, workshops**, publications and promotion of your sustainable tourism activities worldwide.
- Interact with **policy makers** working on a sustainable tourism development.



Linking Tourism & Conservation (LT&C) one of GPST projects

1. A **protected area** is a clearly defined geographical space, recognized, dedicated and managed, through legal or other effective means, **to achieve the long term conservation of nature** with associated ecosystem services and cultural values.
2. Globally 30,000 protected areas that covered over 13, 250, 000 km²
3. They are important for research and education, and contribute significantly to local and regional economies, most obviously from **tourism**.



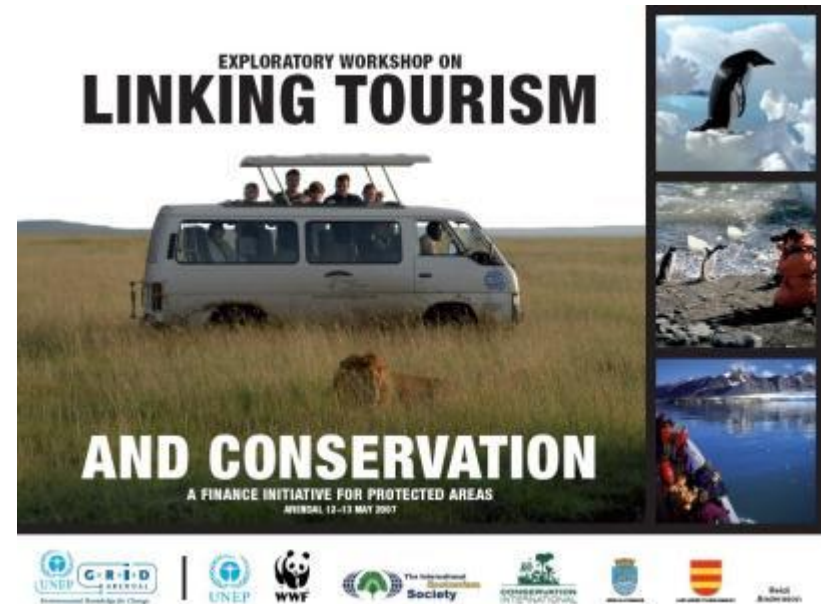
Background

Tourism is one of the largest sector in society (potentially) supporting protected areas

More than 50% of all tourist visiting a foreign country make use in some way of protected areas (IUCN)

Experience in protected areas can make tourists engaged in conservation

Coordinated guiding, demonstration and awareness raising how **tourism can support protected areas and has major potential to raise investments into conservation via tourism.**



LT&C Mechanisms

Entrance/User Fees – Nepal, Costa Rica

Tourism Company Foundations - PAN Parks, Basecamp

Investment Funds – Verde Ventures

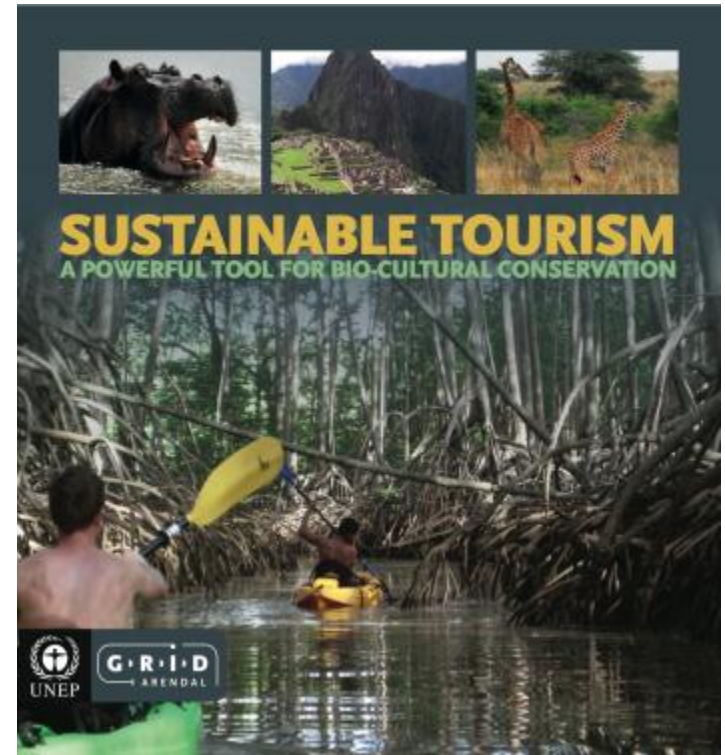
Visitor Donations/ Travelers Philanthropy

Industry Surcharges – transportation fees, hotel

“Sister Parks”– sharing knowledge, experience, funding

Adult Continuing Education Programs – USA

Biodiversity offsets - Nature Air



Svalbard as Model for LT&C

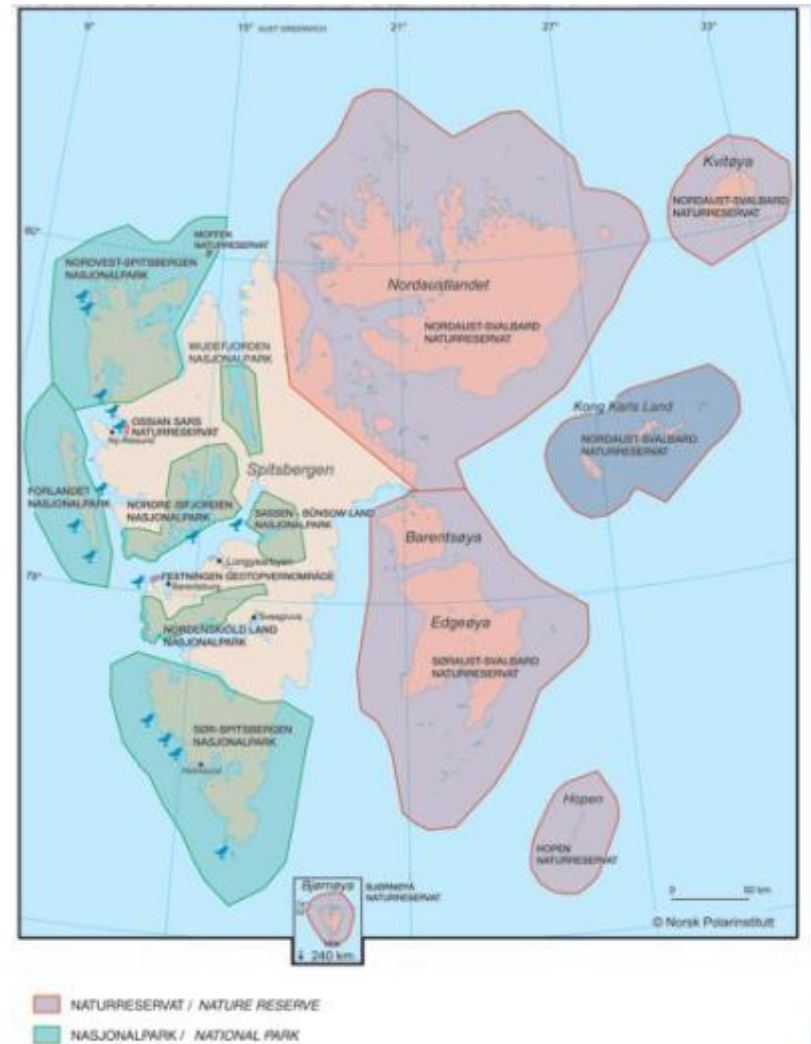
21 nature reserves, 7 national parks, one protected geotope (62% protected)

Environmental Fund for PA management and tourist guiding

Tourists practically involved

Web-based guide information

Tourism research and education



Opportunities in the Arctic



Upcoming Projects (2011-12)

1. New publication and workshop - visually oriented book focussing on current trends in the Arctic and **best cases of sustainable tourism**.
2. Education tour on climate change - British Council



Linking Tourism & Conservation of the Environment in the Arctic

Presented by:

Lawrence Hislop
UNEP Polar Programme
UNEP/GRID-Arendal
Arendal, Norway

Venue:

Tourism Development in
Northern Regions
Arkhangelsk, Russia

Date:

May 25, 2011

